

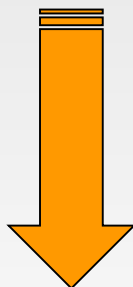
PA970 HAS BEEN REPLACED BY PA970A

WATER PUMP HOUSING MODIFICATION

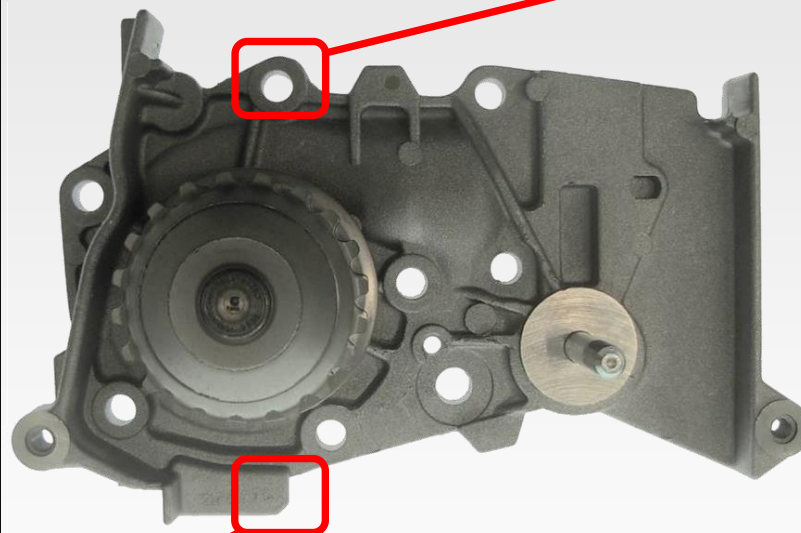
PA 970 – SALE OF ALL STOCK



1

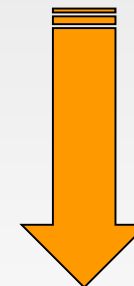
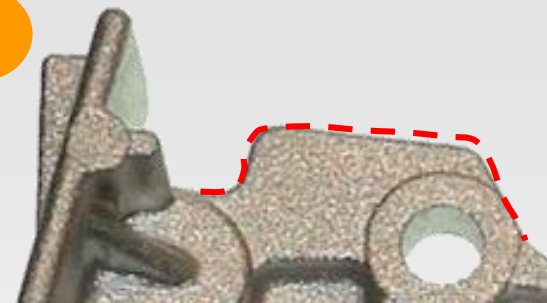


PA 970A



2

PA 970 – SALE OF ALL STOCK



PA 970A



INDUSTRIE SALERI ITALO

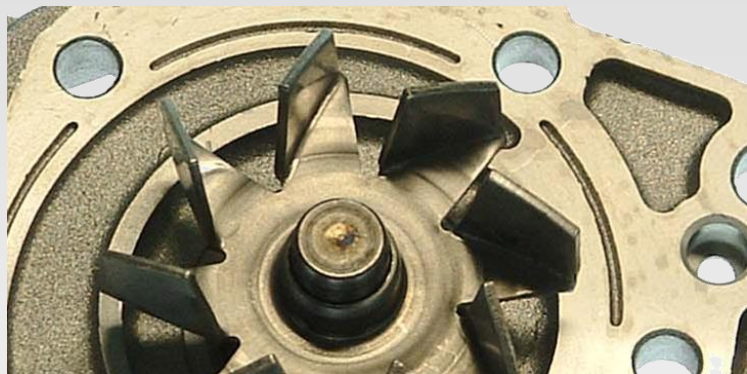
PREMIUM WATER PUMPS



PA970 HAS BEEN REPLACED BY PA970A

WATER PUMP HOUSING MODIFICATION

PA 970 – SALE OF ALL STOCK

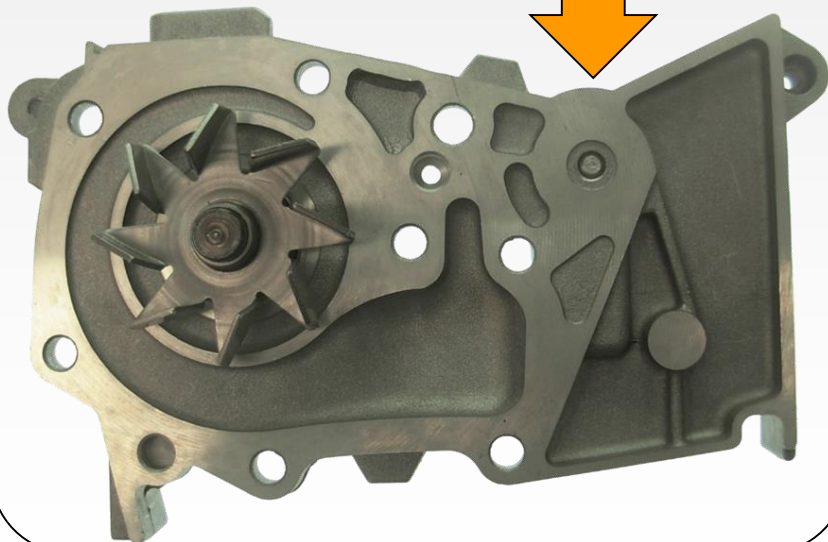
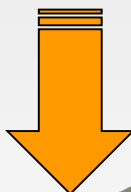


3

+



PA 970A



+



=



NEW!

PREMIUM WATER PUMPS



INDUSTRIE SALERI ITALO



PA970 HAS BEEN REPLACED BY PA970A

OE NUMBERS AND CAR APPLICATIONS PA970A *

PA Code	OEM	OEM2	OEM3	OEM4	Car maker
PA970A	2101000QAA				NISSAN
PA970A	7700105176	7700105378	7700274330	8200146297	RENAULT

PA Code	Make	Model	Fuel	Model description	Engine	Date	KW	Notes
PA970A	DACIA	Logan	B	Logan 1600 16V	K4M690/694	1/06-12/06	77	
PA970A	NISSAN	Kubistar	B	Kubistar 1600 16v	K4M752/K4M753	8/03-12/06	70	
PA970A	RENAULT	Clio 1998-	B	Clio 1400 16v	K4J700/712/713/780	99-12/06	70,72	
PA970A	RENAULT	Clio 1998-	B	Clio 1600 16v	K4M708/748/800/801/804	3/98-12/06	65,70,79,82,83	
PA970A	RENAULT	Grand Scénic	B	Grand Scénic 1600 16V	K4M761/782/788	04-12/06	77,83	
PA970A	RENAULT	Kangoo	B	Kangoo 1600 16V	K7M746, K4M750/752/753	9/99-01/06	66	
PA970A	RENAULT	Laguna 1994-2001	B	Laguna 1600 16v	K4MF7	98-3/01		
PA970A	RENAULT	Laguna 2001-	B	Laguna 1600 16v	K4M-710	01/-01/07		
PA970A	RENAULT	Megane 1995-2002	B	Megane 1400 16v	K4J714/730/732/750	3/99-01/07	70	
PA970A	RENAULT	Megane 1995-2002	B	Megane 1600	K7M702/703/790	9/99-11/02		
PA970A	RENAULT	Megane 1995-2002	B	Megane 1600 16v	K4M700/701/704/708	3/99-11/02	80	
PA970A	RENAULT	Megane 2002-	B	Megane 1600 16v	K4M760	02-01/07		
PA970A	RENAULT	Megane 2002-	B	Megane 1600 16v	K4M760/761/762/768	11/02-01/07		
PA970A	RENAULT	Modus	B	Modus 1400 16v	K4J770/780	8/04-01/07	65,72	KW72/65
PA970A	RENAULT	Modus	B	Modus 1600 16v	K4M790/794	8/04-01/07	65,82	
PA970A	RENAULT	Scenic 1999-2003	B	Scenic 1400 16v	K4J714/750	99-03	70,72	
PA970A	RENAULT	Scenic 2003-	B	Scenic 1400 16v	K4J730	6/03-01/07	72	
PA970A	RENAULT	Scenic 1999-2003	B	Scenic 1600 16v	K4M700/701/704/708/709	99-03	75,79	
PA970A	RENAULT	Scenic 2003-	B	Scenic 1600 16v	K4M760/761/766/782/788	6/03-01/07	77,72,83	
PA970A	RENAULT	Thalia	B	Thalia 1400	K4J712/713	00-07	72	
PA970A	RENAULT	Thalia	B	Thalia 1600	K7M	95-	66	Engine 100716- ; -150626
PA970A	RENAULT	Thalia	B	Thalia 1600	K4M	99-	79	Engine - 080818

* Car applications review: October 2016. For further updates visit the on-line catalog on www.saleri.it



INDUSTRIE SALERI ITALO

PREMIUM WATER PUMPS



PA970S HAS BEEN REPLACED BY PA970AS

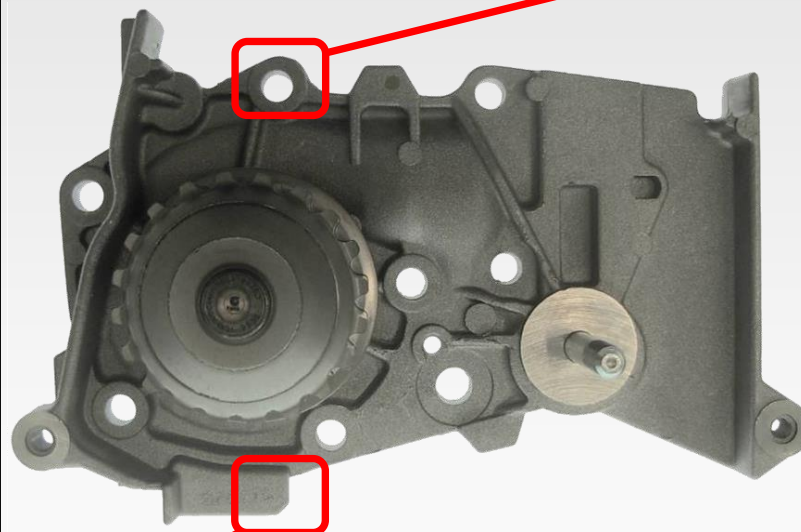
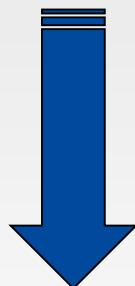
WATER PUMP HOUSING MODIFICATION

PA 970S – SALE OF ALL STOCK



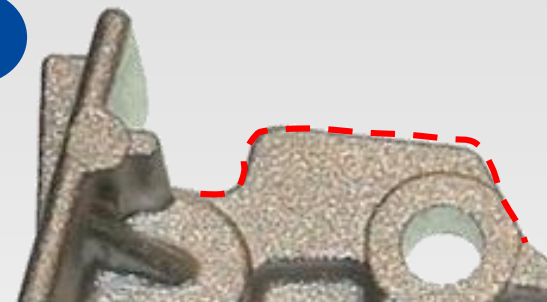
1

PA 970AS

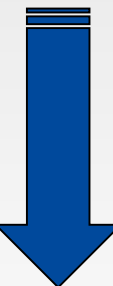
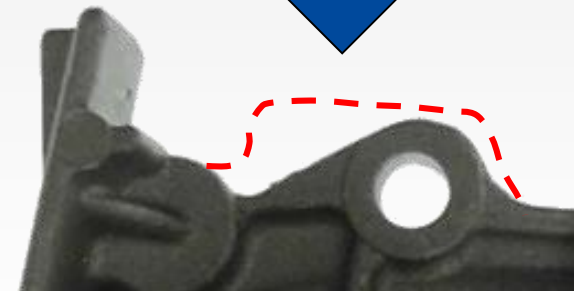


2

PA 970S – SALE OF ALL STOCK



PA 970AS



INDUSTRIE SALERI ITALO

PREMIUM WATER PUMPS

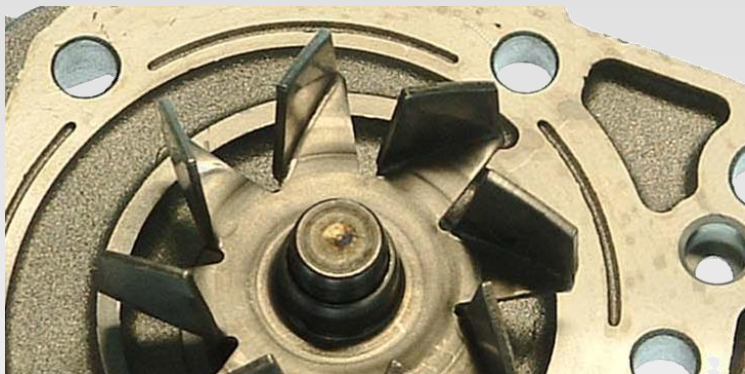


PA970S HAS BEEN REPLACED BY PA970AS

WATER PUMP HOUSING MODIFICATION

PA 970S – SALE OF ALL STOCK

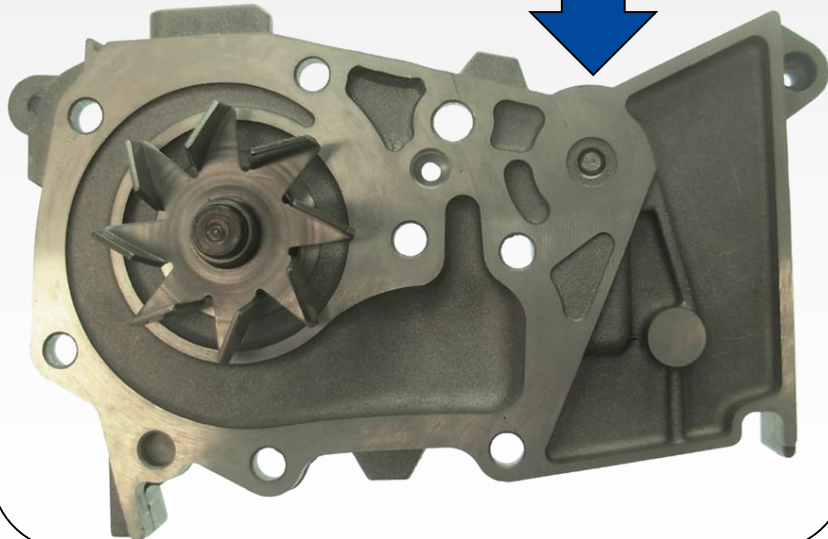
3



+



PA 970AS



+



=



NEW!

PREMIUM WATER PUMPS



INDUSTRIE SALERI ITALO



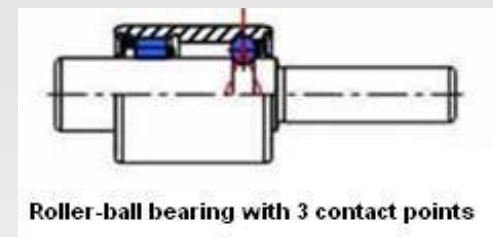
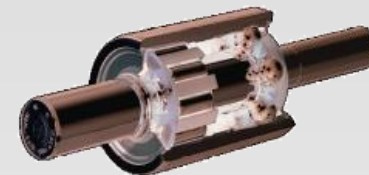
PA970S HAS BEEN REPLACED BY PA970AS

OE NUMBERS PA970AS

In conformity with the OEM, Saleri has developed **PA970AS** equipped with the same **ROLLER-BALL BEARING** found on the original water pump.

In accordance with OES specifications PA970AS is strictly required for the following OEM and applications:

PA Code	OEM	OEM2	OEM3	OEM4	Car maker
PA970AS	210101302R				DACIA
PA970AS	2101000Q0F				NISSAN
PA970AS	210101302R	210105296R	8200428447	8200582675	RENAULT



PA970AS is also **suggested for PA970A OE numbers and applications**, although the normal version of the pump (PA970A) is still available as a more competitive option.



ATTENTION

PA970A does not fit a ROLLER-BALL BEARING
Therefore
It CAN NOT be used for PA970AS applications



INDUSTRIE SALERI ITALO

PREMIUM WATER PUMPS



PA970S HAS BEEN REPLACED BY PA970AS

CAR APPLICATIONS PA970AS *

PA Code	Make	Model	Fuel	Model description	Engine	Date	KW	Notes
PA970AS	DACIA	Dokker	B	Dokker 1600 8V	K7M812	11/12-	63	
PA970AS	DACIA	Duster	B	Duster 1600 16V	K4M606/616/690/696	3/10-	75, 77	
PA970AS	DACIA	Lodgy	B	Lodgy 1600 8V	K7M812	03/12-	61	
PA970AS	DACIA	Logan	B	Logan 1400 8v	K7J710	12/09-	55	
PA970AS	DACIA	Logan	B	Logan 1600	K7M710/714/718	12/09-	64	
PA970AS	DACIA	Logan	B	Logan 1600 16V	K4M690/694/696 , K7M764/800, K7J714	1/06-	62,77	
PA970AS	DACIA	Sandero	B	Sandero 1400 8V	K7J710/714	12/09-	53,55	
PA970AS	DACIA	Sandero	B	Sandero 1600	K4M696, K7M718, K7M800/812/818	6/08-	60,62,64,77	
PA970AS	DACIA	Sandero	B	Sandero 1600	K7M710/714/732	11/09-	64	
PA970AS	LADA	Largus	B	Largus 1600 SW	K4M, K7M	3/12-	62,77	
PA970AS	NISSAN	Kubistar	B	Kubistar 1600 16v	K4M752/K4M753	8/03-	70	
PA970AS	RENAULT	Clio 1998-	B	Clio 1400 16v	K4J700/712/713/780	99-	70,72	
PA970AS	RENAULT	Clio 1998-	B	Clio 1600 16v	K4M708/748/800/801/804	3/98-	65,70,79,82,83	
PA970AS	RENAULT	Clio 1998-	B	Clio 1600 16v	K4M862	4/09-	94	
PA970AS	RENAULT	Duster	B	Duster 1600 16V	K4M616	3/10-	75	
PA970AS	RENAULT	Fluence	B	Fluence 1600 16V	K4M838/839	11/09-	81	
PA970AS	RENAULT	Grand Modus	B	Grand Modus 1600 16V	K4M800/801	1/08-	82	
PA970AS	RENAULT	Grand Scénic	B	Grand Scénic 1600 16V	K4M761/782/788	04-	77,83	
PA970AS	RENAULT	Grand Scénic	B	Grand Scénic 1600 16V	K4M858/866	4/09-	81	
PA970AS	RENAULT	Kangoo	B	Kangoo 1600 8V	K7M750	7/10-	66	
PA970AS	RENAULT	Laguna 2001-	B	Laguna 1600 16v	K4M-710	01-		
PA970AS	RENAULT	Logan	B	Logan 1400 8v	K7J710/714	12/09-	53,55	
PA970AS	RENAULT	Logan	B	Logan 1600 8v	K4M690/697, K7M710/718/800/818	11/09-	64	
PA970AS	RENAULT	Megane 2002-	B	Megane 1400 16v	K4J730/732	3/99-		
PA970AS	RENAULT	Megane 2002-	B	Megane 1600 16v	K4M760	02-		
PA970AS	RENAULT	Megane 2002-	B	Megane 1600 16v	K4M760/761/762/768	11/02-		
PA970AS	RENAULT	Megane 2002-	B	Megane 1600 16v	K4M848/858/866	11/08-		
PA970AS	RENAULT	Modus	B	Modus 1400 16v	K4J770/780	8/04-	65,72	KW72/65
PA970AS	RENAULT	Modus	B	Modus 1600 16v	K4M790/794	8/04-	65,82	
PA970AS	RENAULT	Sandero	B	Sandero 1400 8V	K7J710/714	12/09-	53,55	
PA970AS	RENAULT	Scenic 2003-	B	Scenic 1400 16v	K4J730	1/07-	72	
PA970AS	RENAULT	Scenic 2003-	B	Scenic 1600 16v	K4M760/761/766/782/788/858/866	6/03-	77,81,82,83	
PA970AS	RENAULT	Thalia	B	Thalia 1400	K4J712/713	00-	72	
PA970AS	RENAULT	Thalia	B	Thalia 1600	K4M	99-	79	Engine 080818- ; 156626-
PA970AS	RENAULT	Twingo	B	Twingo 1600 16V	K4M854	6/08-	98	

* Car applications review: October 2016. For further updates visit the on-line catalog on www.saleri.it



INDUSTRIE SALERI ITALO

PREMIUM WATER PUMPS